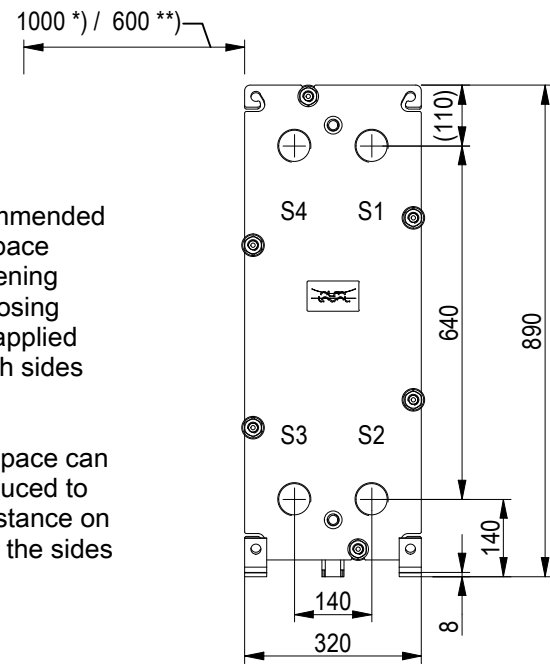


FRAME PLATE

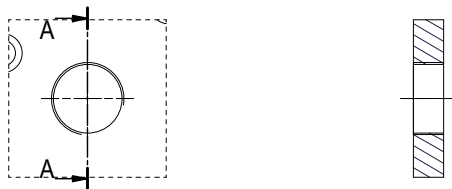


*) Recommended free space for opening and closing to be applied on both sides

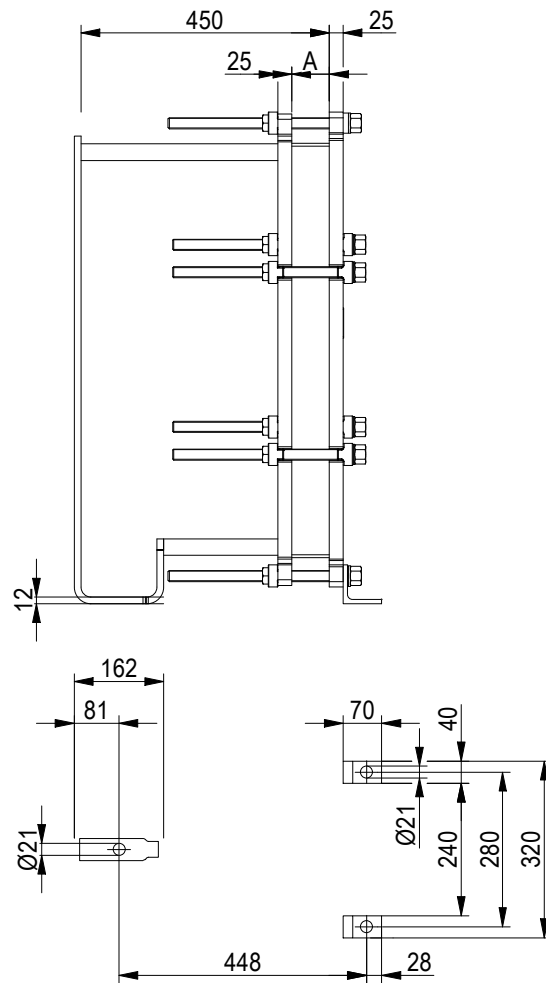
**) Free space can be reduced to this distance on one of the sides

ISO 228 - G 2
S1, S2, S3, S4

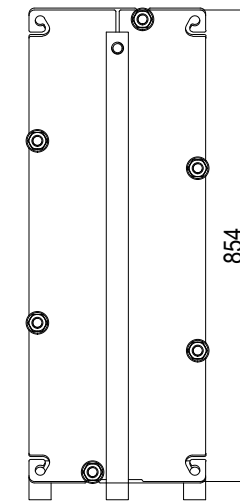
A-A:



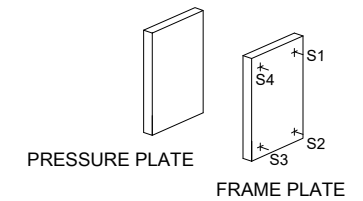
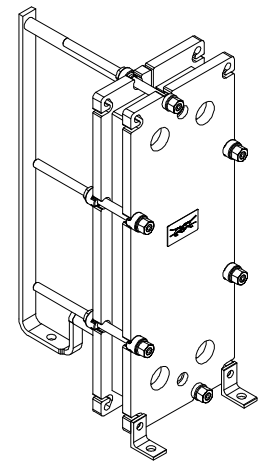
Space between pressure plate and supporting column should be kept free from fixed installations!



PRESSURE PLATE (MOVABLE)



All dimensions in millimeters (mm)



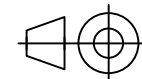
TIGHTENING BOLTS	4 x M20, L = 480 mm	
	2 x M20, L = 480 mm	
A	175 mm	+1%/-1%
APPROX. OUTER DIMENSIONS		
LENGTH	640 mm	
WIDTH	330 mm	
HEIGHT	880 mm	
APPROX. WEIGHTS		
NET WEIGHT, EMPTY	161 kg	
WEIGHT FULL OF WATER	181 kg	
PLATE MATERIAL	ALLOY 316	
PLATE THICKNESS	0.5 mm	
GASKET	NBRP ClipGrip™	

NO. OF UNITS 1



www.alfalaval.com

DRAWING
GASKETED PLATE HEAT EXCHANGER
T6-PFG
PED Article 4.3



ECOSTAR SRL

Do not use this drawing for foundation bolting or piping layout

DATE 20/06/22
REVISION 0